



合気道  
菊水会

天權法理非

KIKUSUI KAI AIKIDO

March, 2003  
Volume 2, Issue 3

# Newsletter

A PUBLICATION  
FOR  
CIRCULATION  
TO KIKUSUI KAI  
MEMBERS



KIKUSUI KAI  
AIKIDO  
P O Box 38032  
London  
SW19 4YB  
ENGLAND

PHONE:  
+44 (0)20 8947 7247

FAX:  
+44 (0)20 8946 7947

EMAIL  
Editor@  
kikusukaikai-aikido.fsnet.co.uk

WEBSITE  
www.  
kikusukaikai.freeserve.co.uk

NEWSLETTERS ON LINE  
www.kikusukaikai-aikido.  
fsnet.co.uk/newsletters

## FOLKESTONE EASTER SCHOOL

Friday 18<sup>th</sup> April to Sunday 20<sup>th</sup> April, 2003  
It is predicted that it will be well supported and is likely to be the largest ever. So please book your accommodation early to avoid difficulties.  
Instructors are:  
Nariyama Shihan 8<sup>th</sup> dan, Brian Elgood 5<sup>th</sup> dan  
Shaun Hoddy 5<sup>th</sup> dan, Adrian Tyndale 5<sup>th</sup> dan  
Assistant Coach Course: Ian Dunn 4<sup>th</sup> dan



Venue: The Saga Pavillion, Enbrook Park, Sandgate, Folkestone, Kent CT20 3SE

## CAN WE HELP?

As the majority of us know, Yamada sensei is the founder of Kikusui Kai. He came over to the UK in 1959 to establish a martial art centre to teach Judo and Aikido. As Mr John Waite says in the February issue of Kikusui Kai Newsletter, Yamada sensei's intension, when he first opened the dojo, was not just to teach Martial arts but to improve the world around them, especially those who are

suffering and in very poor circumstances. 43 years on, he is still working hard to achieve his aim, and his next project is to establish a martial art centre in Sri Lanka, where a friend of one of Yamada sensei's earlier students, whom he met in Japan, runs a hospital on a charity basis. The hospital is currently in danger of closing down as a result of financial problems. The doctor and his staff have had no support from the government nor do they receive enough funds from private sectors, so the future of the hospital is now very much in the air. The doctor is now considering selling off his private property to save the hospital. The charity hospital was built not only to treat the poor. They are very active in educating the people so that they can change their life style and habits, which are causing them to become more prone to illness. They also promote alternative medicines and treatment methods. In addition, they run support programs for the families of patients. Yamada sensei and his students aim to help the doctor in Sri Lanka. This is not a short-term plan - it might be easier for them to raise funds just to help them out and for the hospital to survive this crisis. In fact, they are looking at this as a longer-term project. They would like to establish an organisation where they train young people with the right mind who have a potential of not only helping the future of the hospital but also to contributing to the society and the country. Their goal is to spread the activity throughout the country and improve the country's economy and strength.



In order to start this project, it is essential for Yamada sensei to visit Sri Lanka to see the situation and talk to them himself. The people in Sri Lanka have recently come back to him with positive plans to back up his idea. As members of Kikusui Kai, we have been asked to support this project. Contributions and suggestions for fund raising to enable Yamada Sensei to visit the country are welcome.

## KATA SESSIONS 2003

Kikusui Kai will be running Kata sessions every Wednesday 8pm to 10pm @  
**Open-Door Community Centre, Keevil Drive, Wimbledon, London SW19 6TF**  
and Sunday afternoons (subject to the availability of the venue) @  
**NEMCA AIKIDO, Edenvale Playspace, Woodland Way, Mitcham, Surrey CR4 2DZ**

The sessions are open to any BAA member and there is no need to book, just turn up. With the new changes in BAA syllabus they are a must for anyone wishing to grade. These sessions will compliment the courses being run by GB National Squad Managers David & Vanda and are an attempt to get students from each group to sample different teaching styles and emphasis in the techniques.

## DATES FOR 2003

- |            |  |
|------------|--|
| 01MAR03    | Junior Fun Day – Seven Islands, Rotherhithe – Contact John Grima                 |
| 09MAR03    | BAA Open Competition - King Alfred Leisure Centre, Brighton                      |
| 13MAR03    | BAA Southern Area Grading – Grove Park   |
| 16MAR03    | BAA Southern Area AGM – Sidcup   |
| 30MAR03    | GB National Squad Session – Wakefield, Contact David Fielding                    |
| 12-26APR03 | Trip to Japan – Contact Steve Ryan   |
| 18-20APR03 | Easter School at Folkestone – Contact Joe McEnroe                                |
| 04MAY03    | Kyu Grade Syllabus Course – Contact David Fielding                               |
| 08JUN03    | Goshin Ho 4 <sup>th</sup> /5 <sup>th</sup> Dan syllabus – Contact David Fielding |
| 22JUN03    | BAA National Dan Grading – Yawara, London  |
| 06JUL03    | Dai San Weapons – Contact David Fielding   |
| 20JUL03    | BAA/Kikusui Kai Summer Grading @ NEMCA, Mitcham, Surrey 13.00pm                  |
| 06-10AUG03 | WORLD CHAMPIONSHIPS IN LEEDS, THIS YEARS PREMIERE EVENT.                         |

KIKUSUI KAI VIDEOS



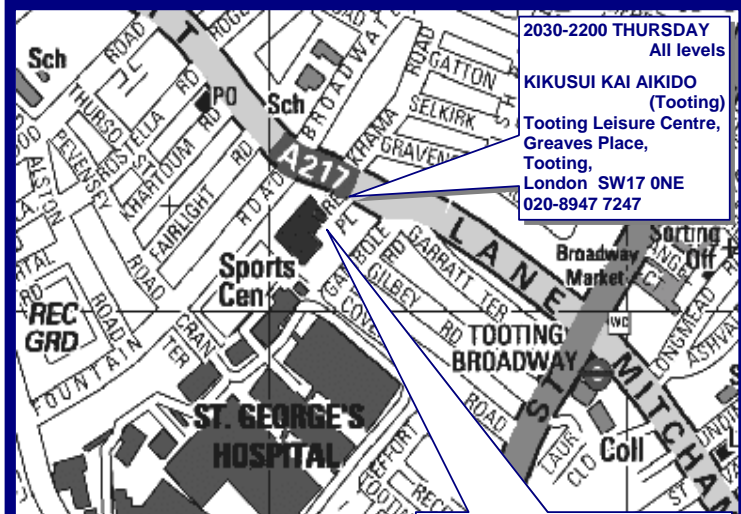
Contact:

John Grima (020-8769 5255) to place your order

KIKUSUI KAI (NEW ZEALAND)

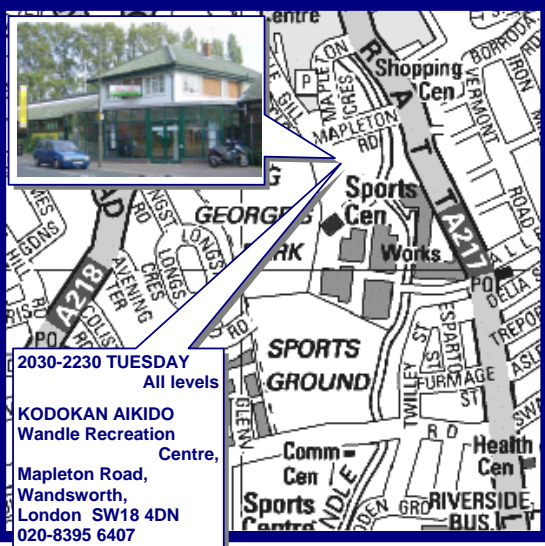
Monday 19:00 - 21:00hrs Birkenhead College, 140 Birkdale Road, North Shore, Auckland, New Zealand
Contact: Coleen Carmichael Phone: 09-483-9039
Tuesday 19:00 - 20:30hrs 478 Beach Road, Murrays Bay, New Zealand
Thursday 19:00 - 20:30hrs Judokwai North Shore, 68 Hillside Road, Glenfield, New Zealand
Contact: John Waite 7th Dan, Pepi Waite 4th Dan
Email: johmandpepi@xtra.co.nz Mobile: +64(0)21-037-9508
Phone: +64(0)9-476 5448 Fax: +64(0)9 476 5449

CLASS TIMES, VENUES & LOCATIONS

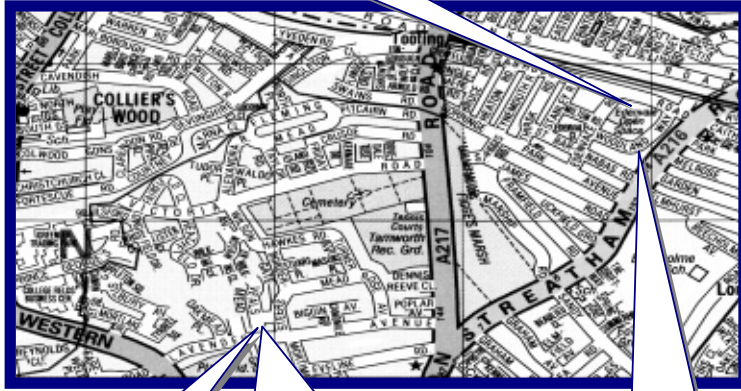


2030-2200 THURSDAY All levels
KIKUSUI KAI AIKIDO (Tooting)
Tooting Leisure Centre, Greaves Place, Tooting, London SW17 0NE
020-8947 7247

0930-1130 SUNDAY All levels
1930-2230 MONDAY Beginners
NEMCA AIKIDO
Edenvale Playspace, Woodland Way, Mitcham, Surrey CR4 2DZ
020-8769 5255 07860 248061



2030-2230 TUESDAY All levels
KODOKAN AIKIDO
Wandle Recreation Centre, Mapleton Road, Wandsworth, London SW18 4DN
020-8395 6407



2000-2130 TUESDAY Beginners
KIKUSUI KAI AIKIDO(Merton)
Lavender Park Pavilion, Lavender Avenue, Mitcham, Surrey CR4 3HL
020-8646 7362 07941 983734



2000-2200 WEDNESDAY All levels
OPEN-DOOR AIKIDO
Open-Door Community Centre, Keevil Drive, Wimbledon, London SW19 6TF
020-8871 8174, 07860 248061



2100-2230 FRIDAY Beginners
FIGHTING FIT AIKIDO
David Lloyd Club, Bushey Road, Raynes Park, London SW20 8TE
020-8947 7247 07860 248061

